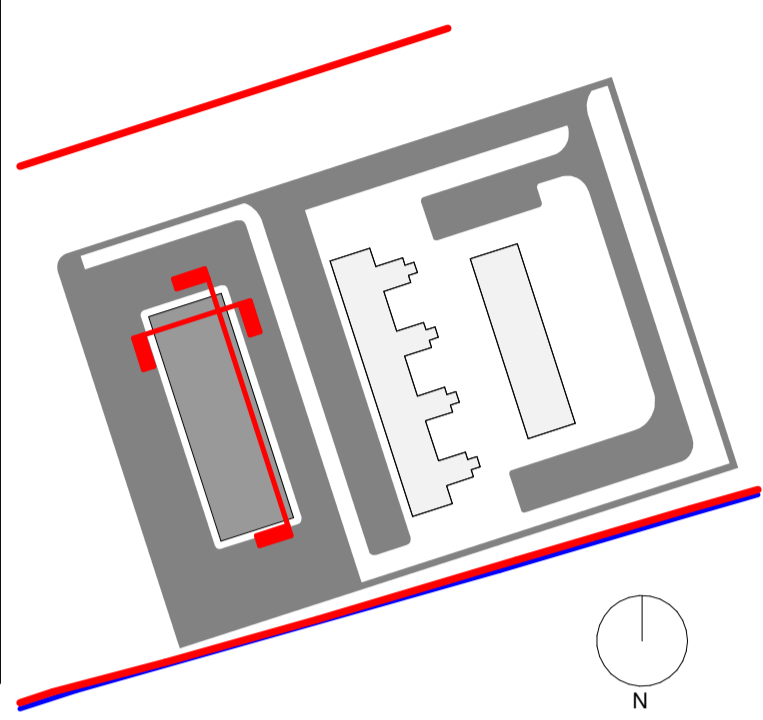


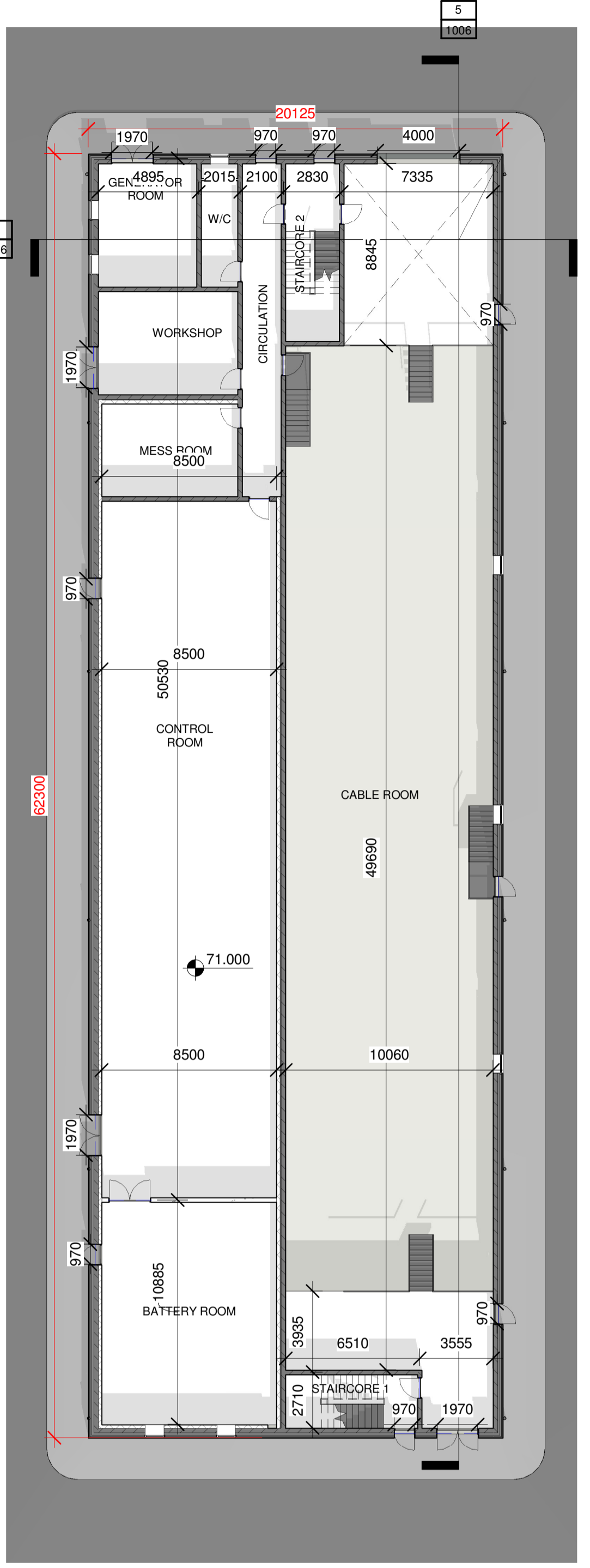


KEYPLAN

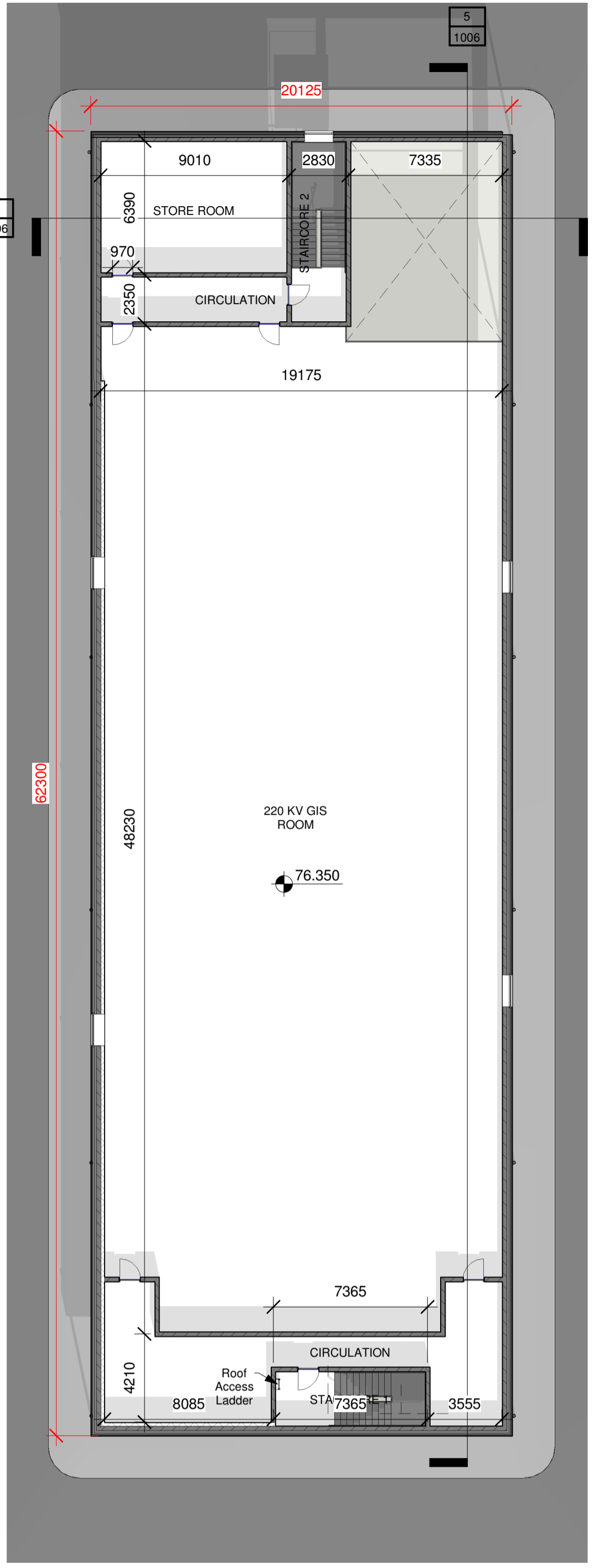


REVISIONS

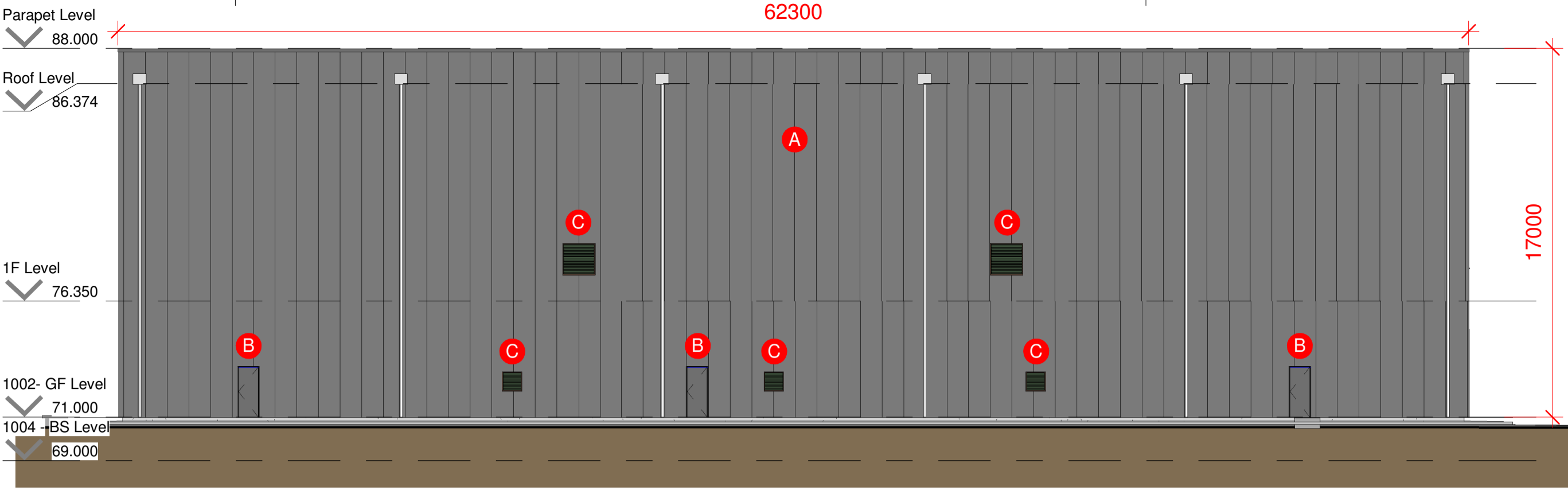
REV NO.	DATE	DRN	CHK	DESCRIPTION
P1	17/07/2020	HN	SM	Issued for SID



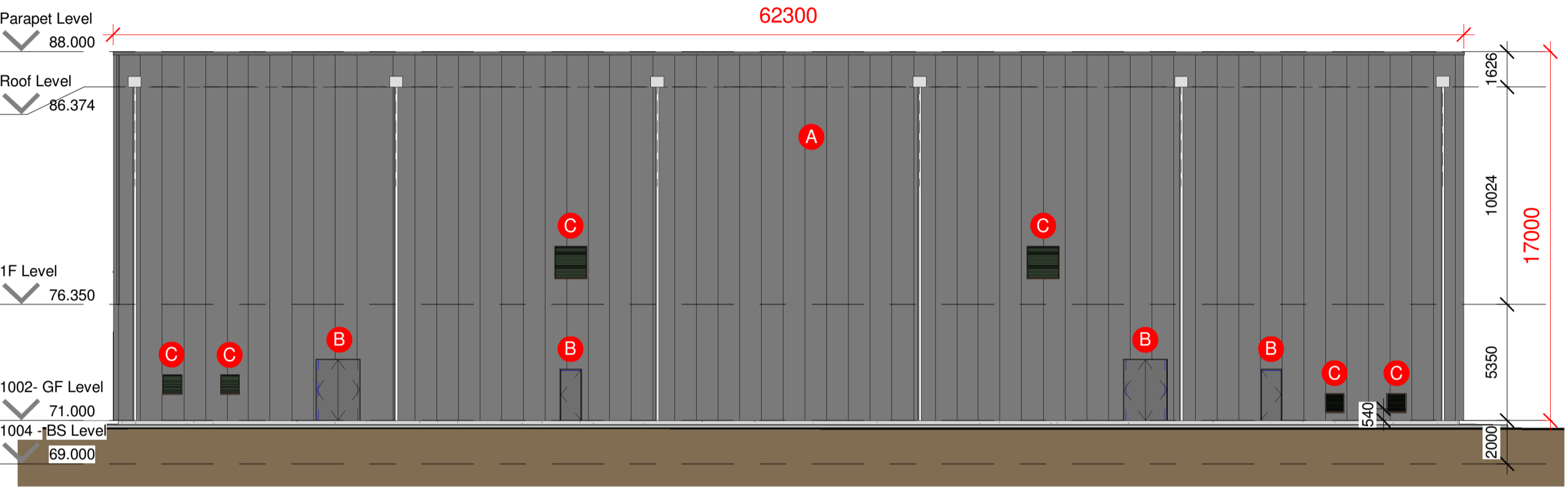
1 1006 220KV Substation GF Plan 1 : 200



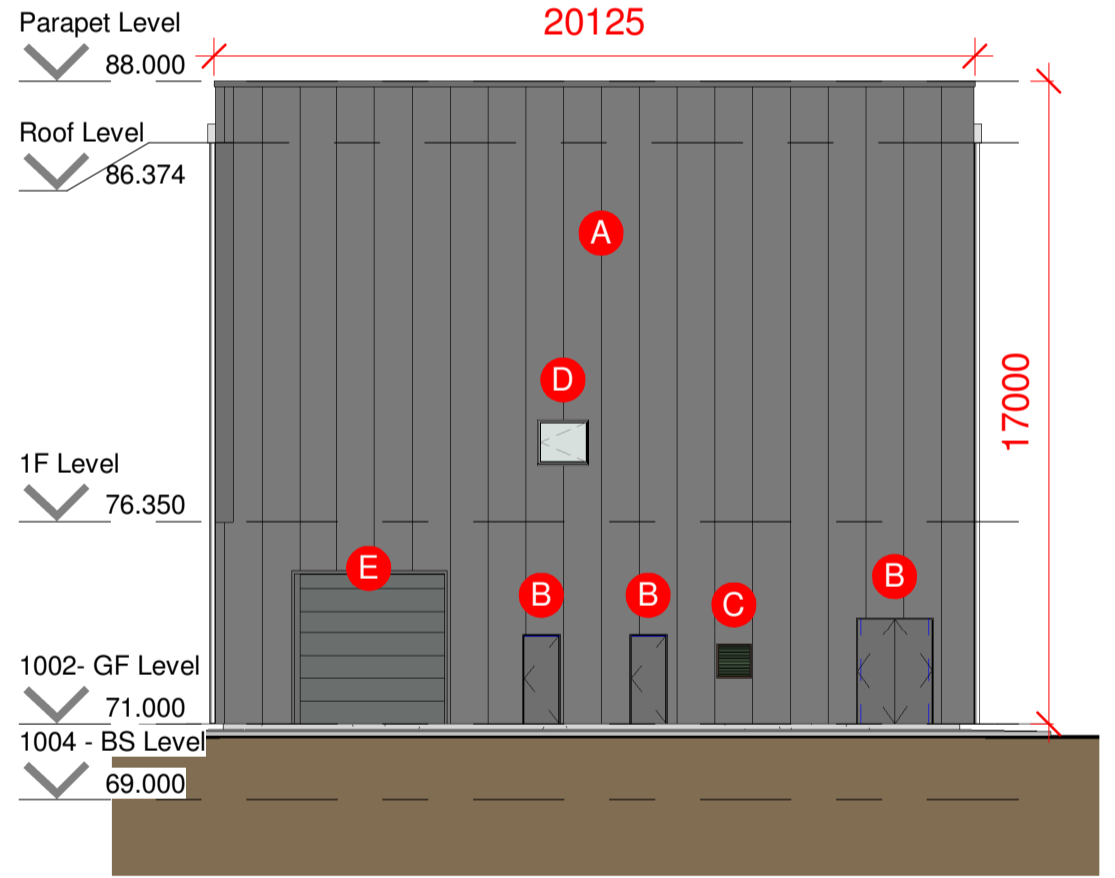
2 1006 220KV Substation FF Plan 1 : 200



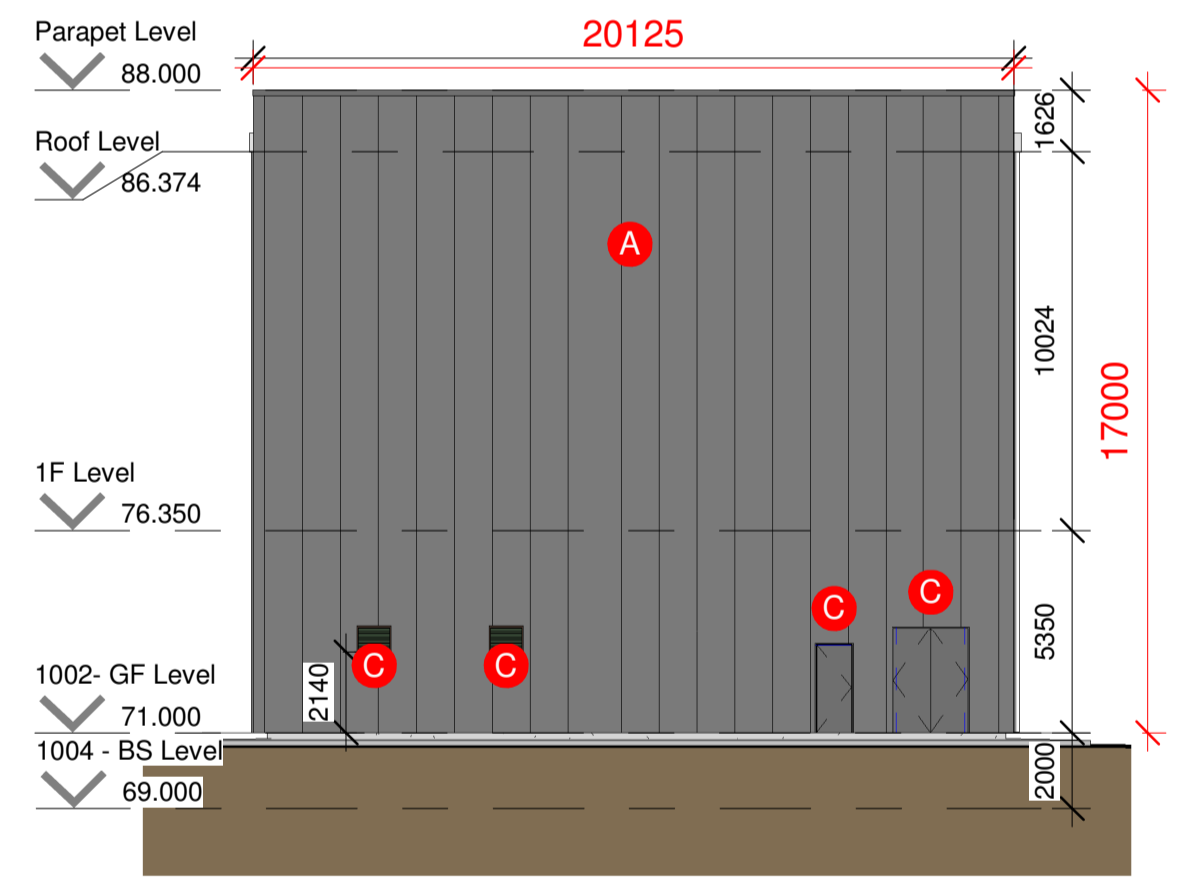
3 1006 220KV Sub Eastern Elevation 1 : 200



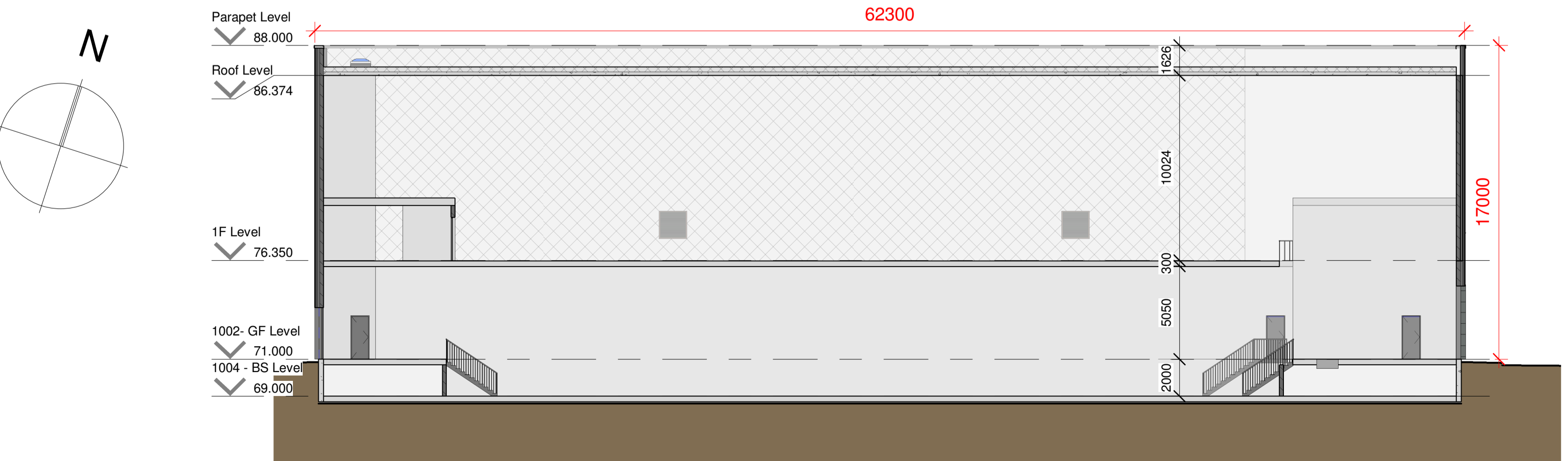
4 1006 220KV Sub Western Elevation 1 : 200



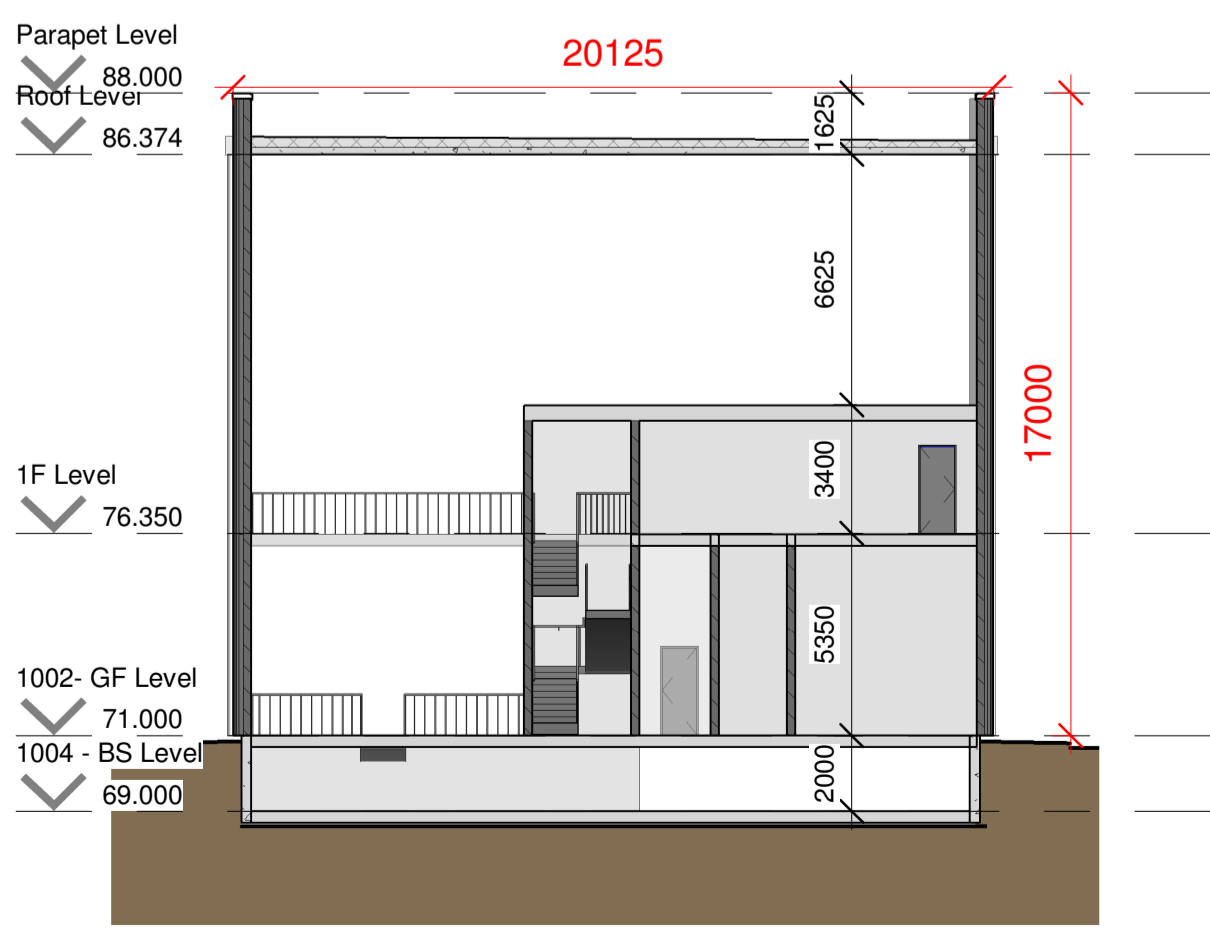
7 1006 220KV Sub Northern Elevation 1 : 200



8 1006 220KV Sub Southern Elevation 1 : 200



5 1006 220KV Sub Section A-A 1 : 200



6 1006 220KV Sub Section B-B 1 : 200

- LEGEND:
- (A) NON-COMBUSTIBLE POWDER COATED METAL CLADDING PANELS - COLOUR TBC
 - (B) SERVICE/ESCAPE DOOR
 - (C) POWDER-COATED LOUVRES
 - (D) WALL-MOUNTED AOV
 - (E) ROLLER SHUTTER DOOR

KAVANAGH TUITE ARCHITECTS

TERMINUS MILLS CLONSKRAGH ROAD D06 XD37 IRELAND T: +353 1 2188500 MAIL@KAVANAGHTUITE.IE

PROJECT: EngineNode 220kV Substation and Grid Connection

PROJECT NO. A1045 STATUS:

TITLE: 220KV Substation GIS Building

DATE: 04/20/20 SCALE: As indicated

DRAWN BY: HN APPR BY: SM

DWG NO. 1006 REV. P1